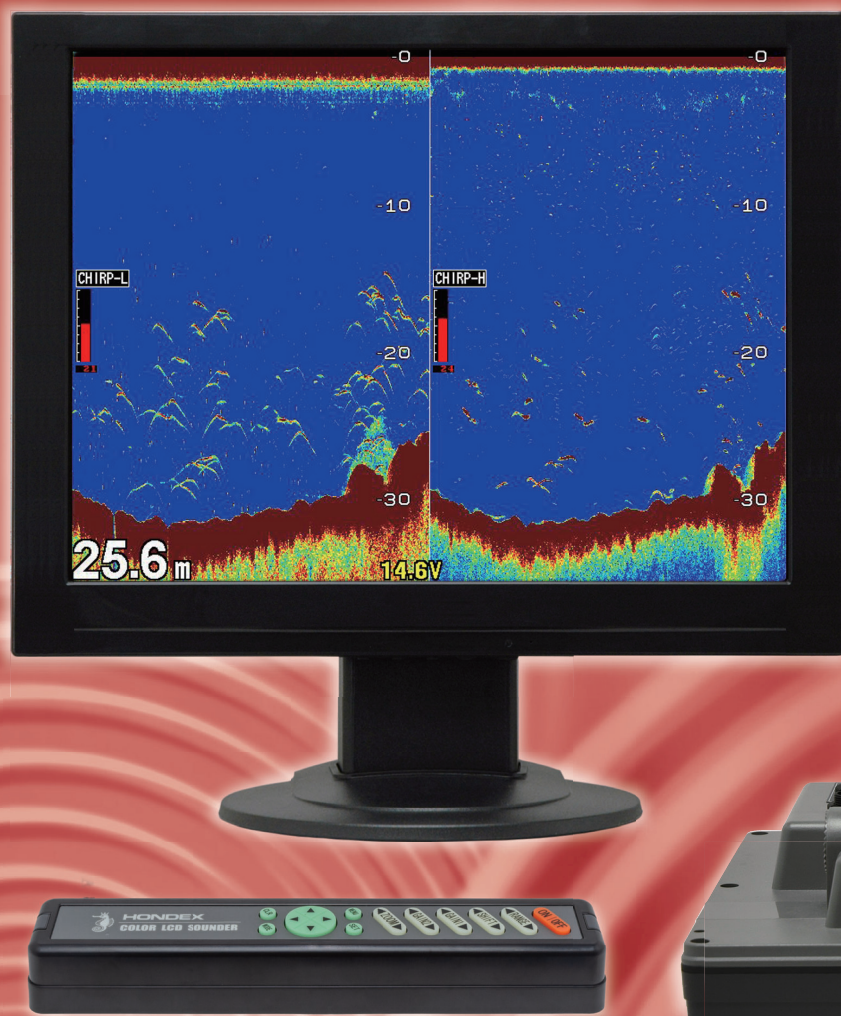


**HONDEX®**

Black-Box Style Chirp Echo Sounder  
**HE-2900B**

# New Standard for Commercial Fishing

## Chirp Enabled System



Black-Box Style Echo Sounder

# HE-2900B

Chirp Model

**CLEAR CHIRP**  
by HONDEX



**HE-2900B**

## ■ Specifications

Operating Voltage	DC11-30V
Power Consumption	Approx. 30W
Dimension	W268 x D238.5 x H89
Weight	Approx. 1.65kg
Display Style	Portrait

## ■ Echo Sounder

Frequency	Chirp: 38-70kHz, 130-220kHz Traditional: 50/200kHz
Output Power	1, 2, or 3kW
Depth Range	0-2,000m
Background	4 colors
Color Configuration	5 patterns

## ■ Chirp Frequency

High-Chirp	130-220kHz
Low-Chirp	38-70kHz

## ■ In the Box

- HE-2900B Main Unit
- Power Cable: DC07
- Remote



Main Unit



DC07



Remote

## ■ Options

- Water Temp(Thru-Hull) Kit: TC02CS(15m), TCK01
- Water Temp(Transom): TC03-05/10 (5/10m)



TC02CS



TCK01



TC03-05/10

## Compatible Transducer

**TD360**

(2kW 38-70kHz + 1kW 130-220kHz)

**TD380**

(3kW 38-70kHz + 1kW 130-220kHz)

Specifications are subject to change without notice.

● Dealer

**HONDA ELECTRONICS CO., LTD.**

20 Oyamazuka, Oiwa-cho,  
Toyohashi, Aichi 441-3193, Japan

TEL: +81-532-41-2512

<https://www.honda-el.co.jp/en/marine/>

ISO14001

**HONDEX®** is the registered trademark of HONDA ELECTRONICS CO.,LTD. in the United States, Japan and other countries.

30 MAR 2021