

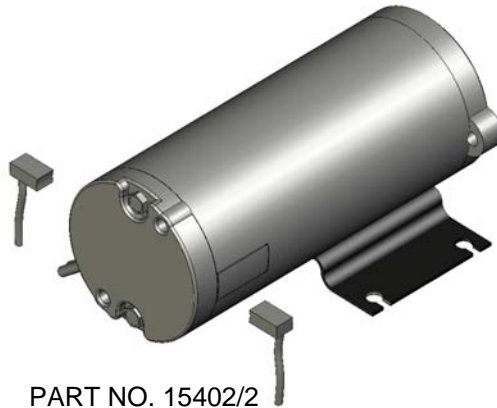
MARINE SPARES - PR/ML MOTOR BRUSHES

HYDRAULIC PROJECTS MARINE SPARES ARE AVAILABLE FROM STOCK, PLEASE PHONE, FAX OR EMAIL WITH YOUR REQUIREMENTS QUOTING THE PART NO. AND DESCRIPTION. ALSO QUOTE THE UNITS SERIAL NO.

(MOUNTING FEET ARE NOT FITTED TO ML ACTUATORS)



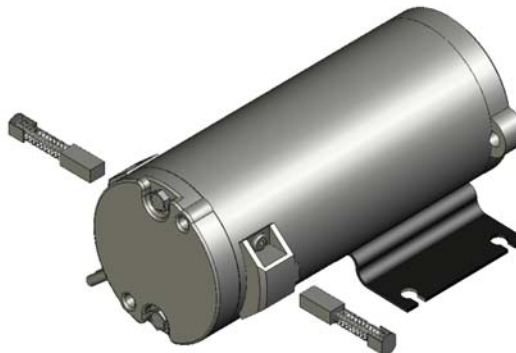
PART NO. 15220/2
DESCRIPTION: EXTERNAL BRUSH - SCREW TYPE



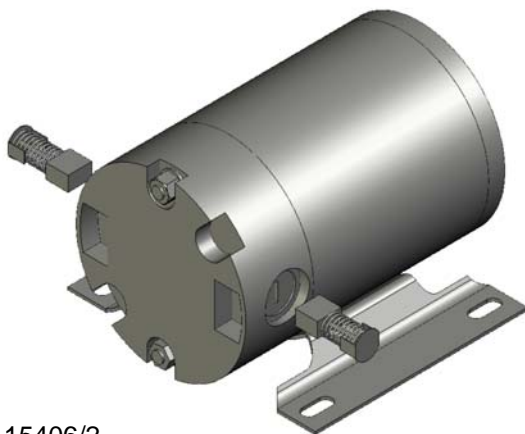
PART NO. 15402/2
DESCRIPTION: INTERNAL BRUSH - SOLDER TYPE



PART NO. 15405/2
DESCRIPTION: EXTERNAL BRUSH - SCREW TYPE



PART NO. 15404/2
DESCRIPTION: EXTERNAL - BRUSH CLIP TYPE



PART NO. 15406/2
DESCRIPTION: EXTERNAL BRUSH - SCREW TYPE 180W

Check the motor brush length annually for wear and replace if less than 6mm carbon length remaining.

Remove carbon dust before re-fitting / fitting new brushes. Check that the brushes slide freely in their holders.

Take care with the plastic covers, do not over-tighten the screw type.

On solder-type brushes the rear cover needs to be removed for inspection and maintenance. Ensure any shims behind the bearings are replaced in the same order as removal.

Note on earlier units removal of the motor will allow air to enter the hydraulic system.