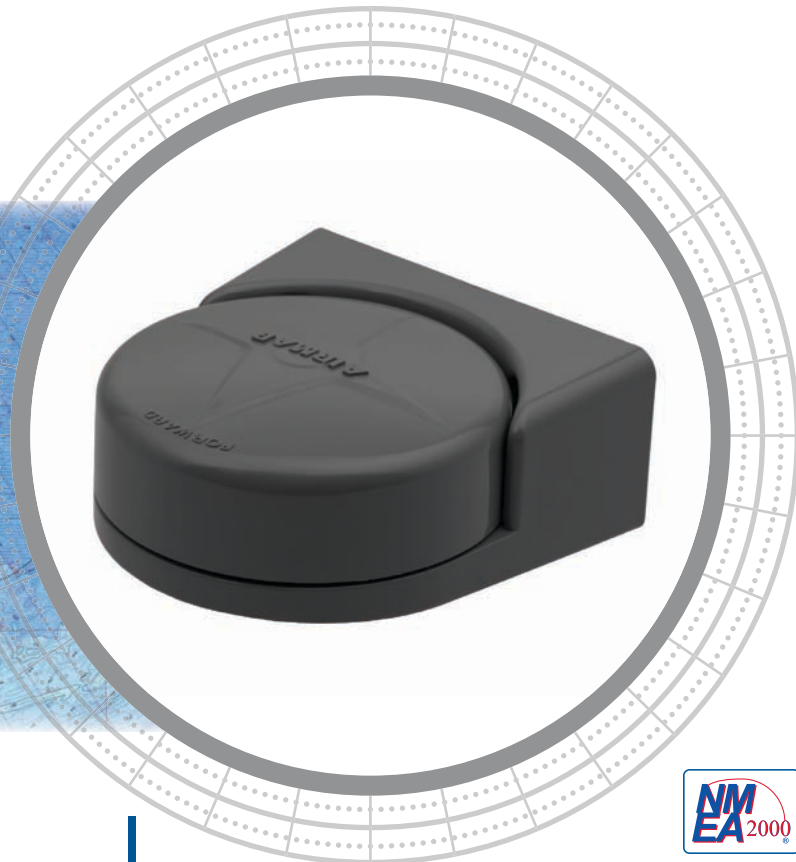
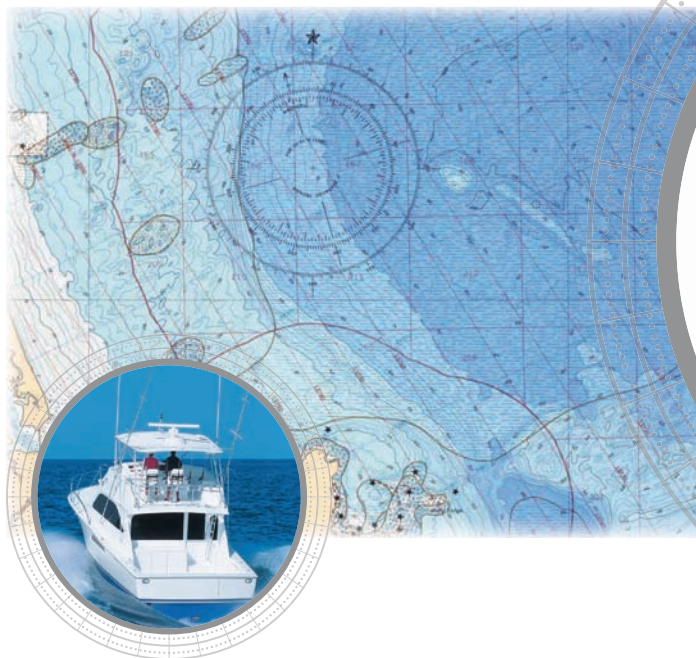


H2183



The Advantage is the Accuracy

Whether you are offshore fishing or just enjoying family time on the water, feel confident and comfortable that the H2183 is your reliable source for heading information. The solid-state three-axis compass, combined with Airmar's additional advanced sensors and software provide unparalleled performance.

What sets the H2183 apart from the competition is its ability to maintain 2° of heading accuracy under dynamic motion conditions, such as steep heeling, hard turns, and rough seas. Heading integrated with the three-axis rate gyro and three-axis accelerometer data allows the H2183 to maintain 2° of accuracy even if the vessel is pitching and rolling up to 30°. This level of accuracy is perfect for interfacing with autopilots, chart plotters, and radar systems.

The H2183's innovative circular design easily mounts and aligns on ANY angled bulkhead. Designed for simultaneous use with NMEA 0183 and NMEA 2000® devices, the waterproof, easy-to-install sensor comes with a single cable which can be wired into both NMEA 0183 and NMEA 2000 networks on the vessel.

Heading Sensor

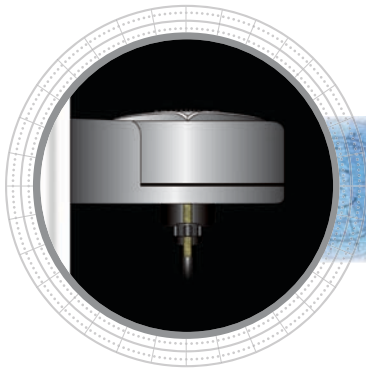
Features

- Better than 1° heading accuracy in static conditions
- Best-in-class 2° heading accuracy in dynamic conditions
- Three-axis solid-state compass provides heading data
- Three-axis accelerometer provides pitch and roll data
- Three-axis rate gyro provides rate-of-turn data
- Only recreational heading sensor that uses a three-axis rate gyro
- Easily mounts on any angled bulkhead
- IPX6 waterproof enclosure
- Default 10 Hz update rate for heading
- Outputs NMEA 0183 and NMEA 2000 data simultaneously



Sensing Technology

www.airmar.com



Technical Information

SPECIFICATIONS

Compass Accuracy:

- 1° RMS when level
- 2° RMS for pitch and roll angles up to 30°
- 3° RMS for pitch and roll angles up to 45°

Heading Display Resolution: 0.1°

Settling Time: 1 second (adjustable)

Heading Data Output Update Rate:

- 10 times per second—NMEA 0183
- Adjustable up to 20 times per second—NMEA 2000®

Heading Variation: Yes

Rate-of-Turn Range: 0° to 70° per second

Rate-of-Turn Accuracy: 1° per second

Rate-of-Turn Data Output Update Rate:

- 10 times per second—NMEA 0183
- Adjustable up to 20 times per second—NMEA 2000®

Pitch and Roll Range: ±50°

Pitch and Roll Accuracy: <1°

Pitch and Roll Display Resolution: 0.1°

Pitch and Roll Boat Alignment: Yes with software

Pitch and Roll Data Output Update Rate:

- 10 times per second—NMEA 0183
- Adjustable up to 20 times per second—NMEA 2000®

Operating Voltage: 9 VDC to 16 VDC

NMEA 2000® Load Equivalency Number (LEN): 3

Certifications and Standards: CE, IPX6, RoHS, IEC60945

DATA OUTPUT PROTOCOL

NMEA 0183 Sentence Structure

- \$HCHDG..... Heading, Deviation, and Variation
- \$HCHDT Heading Relative to True North
- \$TIROT..... Rate of Turn
- \$YXXDR Transducer Measurements: Vessel Attitude

NMEA 2000® Supported PGNs

- 127250..... Vessel Heading
- 127251..... Rate of Turn
- 127257..... Attitude

DIMENSIONS

