



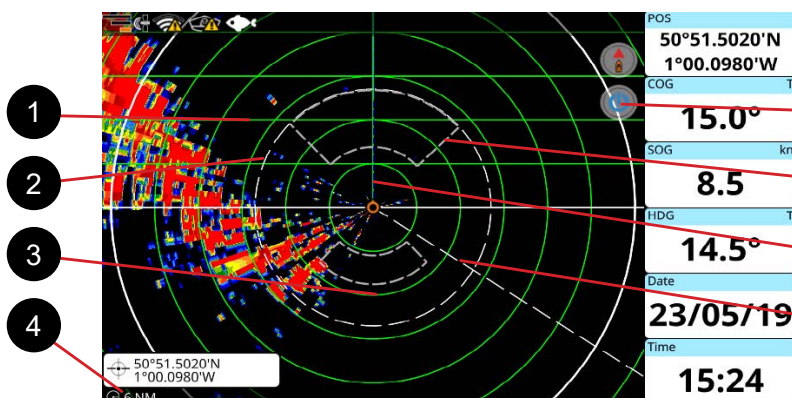
MDS-15 High Definition Radar Antenna

Transform your Seiwa chartplotter into an integrated radar display!

Easily connect the 4kW high power all weather radar MDS-15 to Seiwa navigation systems for visual situational awareness, fully integrated with electronic charts, AIS and other onboard features.

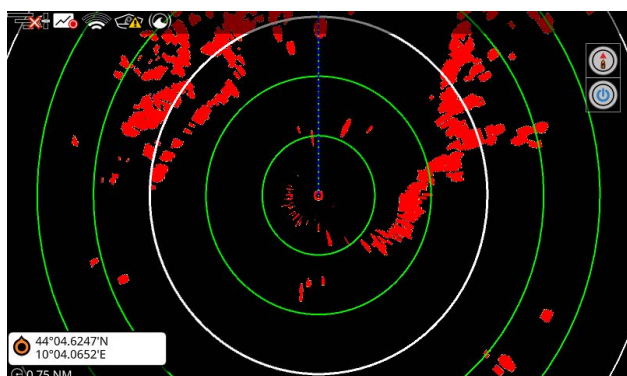
- **Compatible** with the Seiwa family of multi-function chartplotters, including the Explorer 23 WiFi, as well as the SWx900 and SWx1200 series.
- **Instant connectivity** via fast and easy WiFi link from your Seiwa chartplotter to radar MDS-15 through the included KM-Router, while the radar connects to the KM-Router through ethernet cable.
- **Dedicated radar page** for configuration, tuning and display of radar image onscreen.
- **Split screen mode** with radar and chart screens side-by-side for clear viewing and quick comparison.
- **Radar overlay mode** for viewing radar image draped over chart display.
- **Multiple orientation modes** for flexible display (North Up, Heads Up, Course Up).
- **Full radar antenna control and configuration**, including Automatic and Manual tuning modes.
- **Anti-clutter** modes help to compensate for sea and rain interference.
- **Echo stretch** to magnify targets for easier viewing.
- **Overlay and full info** for AIS and DSC targets, as well as user marks, events and routes.

Onscreen radar tools:

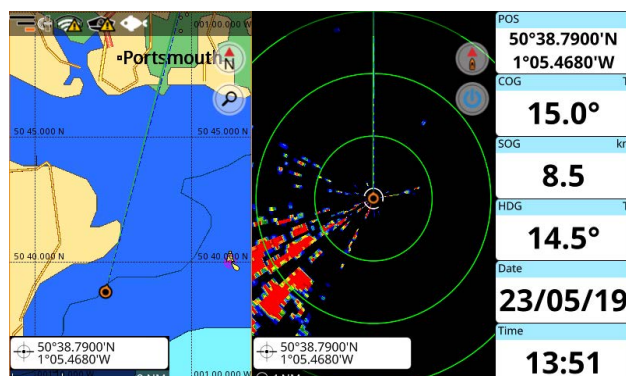


- 1 Parallel Cursor
- 2 Variable Range Marker (VRM)
- 3 Range Rings
- 4 Range Databox
- 5 TX / Stand-by Icon
- 6 Guard Zones
- 7 Heading Line
- 8 Electronic Bearing Line (EBL)

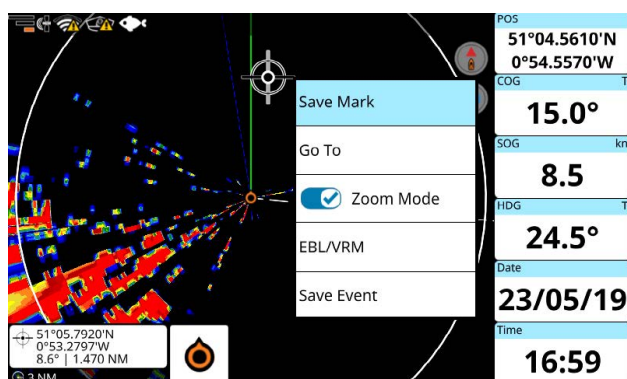
* Radar implementation is available on chartplotters running software version 5.2.0 or greater.



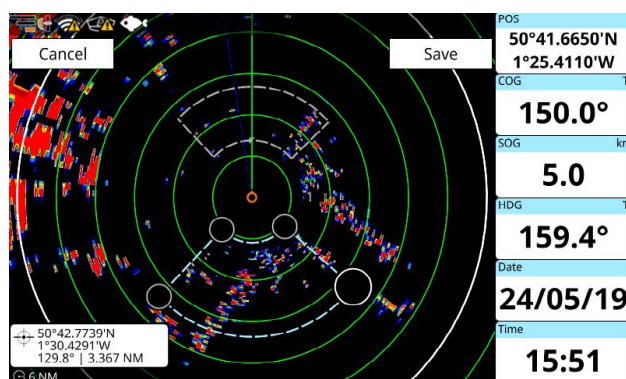
Radar Page



Map/Radar Split Page



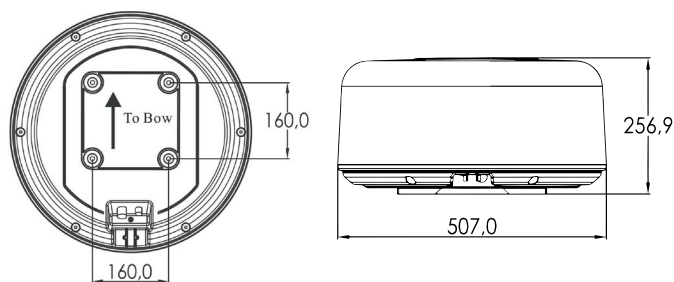
Contextual menu



Guard zone edit mode

MDS-15 radar antenna specifications

- Radiator length: 50cm closed radome with integrated 46cm hybrid array
- Power: 4kW
- Weight: 8500 g
- Range: 36 NM maximum range
- Antenna rotation speed:
 - Long range (3~36nm): 24 RPM (+2)
 - Medium range (1.5~3nm): 36 RPM (+2)
 - Short range (0.125~1.5nm): 48 RPM (+2)
- Processing: Digital on-board processing
- Connectivity: Long-range WiFi
- Wind resistance: Relative wind speed 100 knots (51.5 m/s)
- Power supply: 10.5VDC to 40VDC (15 Meter)
- Environment: Temperature -25°C to +70°C | Relative humidity 93% or less at +40°C
- Shielded ethernet cable with RJ45 connector (15 meter)
- Compass safe distance from antenna unit: Standard compass 130 cm – Steering compass 95 cm
- Compliance: CE and FCC
- KM-Router WiFi and ethernet router included



Dimensions are in mm

