



RELIEF SHADING
NEW

PLATINUM+ CARTOGRAPHY, WITH SONARCHART™ SHADING AND RELIEF SHADING

SonarChart Shading, gives a unique perspective of underwater topography at a glance. Created from the high-definition contour data within SonarChart, our shading presents a detailed rendering of the seafloor and lake bottoms in varying shades of blue.

For coastal and inland boat owners who need to know as much as possible about sea and lakes beds, **Relief Shading** offers a better understanding of bottom detail for improved fishing and diving. Included as a downloadable option with Platinum cards.

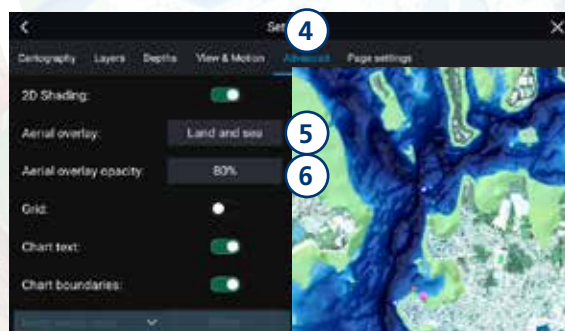
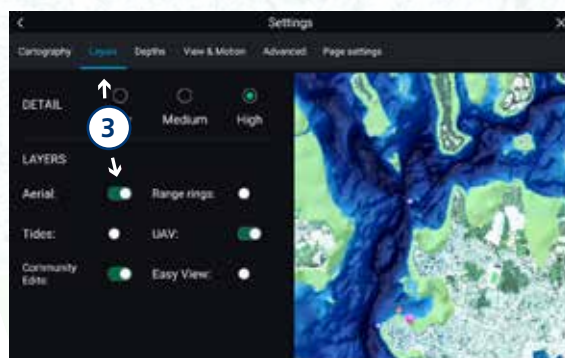
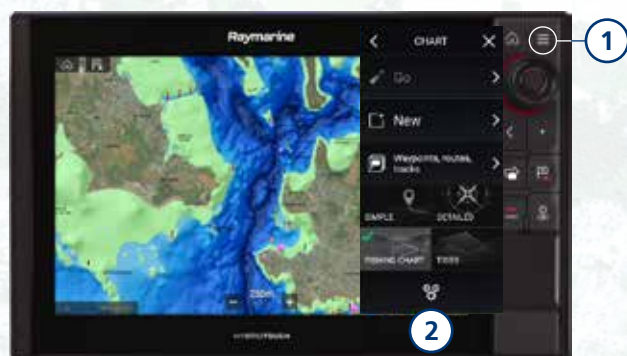
Upon download of any Relief Shading area, the existing SonarChart Shading for the entire coverage area will be removed from your card. Note: to ensure chart plotter compatibility, only one overlay may be hosted on a Navionics card at a time, but you may return to swap overlays as long as your subscription is active.

Check compatibility: navionics.com/support/compatibility-guides

RELIEF SHADING
NEW

THIS IS AN EXAMPLE ON HOW TO DISPLAY SONARCHART™ SHADING AND RELIEF SHADING ON A RAYMARINE AXIOM PRO

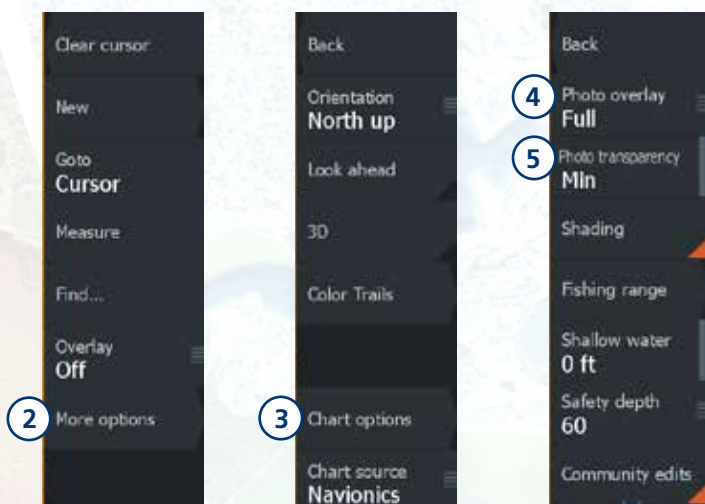
- 1 Press the **Menu** button
- 2 Select **Settings**
- 3 Select **Layers** and enable Aerial menu item
- 4 Select **Advanced**
- 5 Select **Aerial Overlay** and choose the setting you prefer
- 6 Choose the appropriate aerial overlay opacity (suggested opacity 50%-75%)



RELIEF SHADING
NEW

HOW TO DISPLAY SONARCHART™ SHADING AND RELIEF SHADING ON A LOWRANCE HDS LIVE

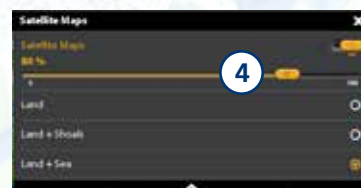
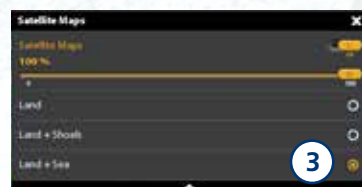
- 1 Press the **Menu** button
- 2 Select **More options**
- 3 Select **Chart options**
- 4 Select **Photo Overlay** and choose the setting you prefer
- 5 Select **Photo Transparency** and choose the appropriate transparency with "+" and "-"



RELIEF SHADING
NEW

HOW TO DISPLAY SONARCHART™ SHADING ON A HUMMINBIRD SOLIX

- 1 Press the **Satellite Maps** button
- 2 Activate toggle
- 3 Choose the setting you prefer
- 4 Choose the appropriate transparency



RELIEF SHADING
NEW

HOW TO DISPLAY SONARCHART™ SHADING ON A HUMMINBIRD HELIX

- 1 Plug in your card. If it is not recognized, press twice on the **Menu** soft button > **Chart** > **Map source** > select **Auto**.
- 2 Press the **Menu** soft button twice > go to **Platinum** > **Chart Aerial Overlay** > select **Land + Water**

