

Marine GPS Chart Plotter

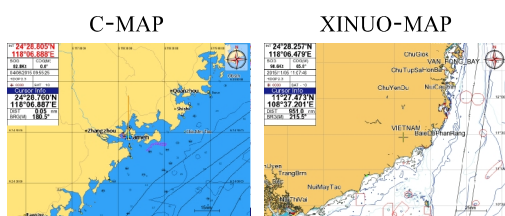
Model: HM-1512

Support XINUO-MAP & C-MAP (MAX) Card



Features

- ▶ 12.1 inch LCD with 800 x 600 resolution.
- ▶ C-MAP MAX & XINUO-MAP dual chart systems for user to choose.
- ▶ Support AIS function, such as CPA alarm, AIS vessel monitor, etc.
- ▶ Multi-language support and six display modes options.
- ▶ Built-in global chart, upgrade chart regularly.
- ▶ Floating GND power design, more stable and reliable.



C-MAP (MAX)

Fully satisfy customers' require of electronic chart.

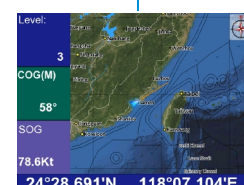


Update XINUO-MAP regularly.

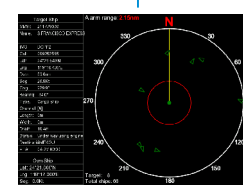
Six modes of display



Standard Chart View



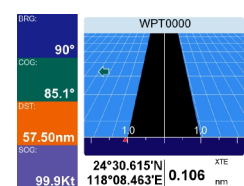
Simple Chart View



AIS Data



GPS Data



3D Navigation



Compass

HM-1512 SPECIFICATIONS

Display unit

Display Type	Color TFT LCD
Display Size	12.1 inch
Display Resolution	800 × 600 pixels (SVGA)
Display Brightness	500cd/m ² (typical)
Language	English, Simplified Chinese, Traditional Chinese, Vietnamese, Bahasa Malaysia, Turkish, Thai, Greek, Indonesian, Japanese, Korean
Display Modes	Standard Chart View, Simple Chart View, AIS Data , GPS Data, 3D Navigation, Compass
Memory Capacity	10000 waypoints, 200 routes (100 points each route), 10000 marks, 1000000 trackpoints, 200 boundary lines (40 points each line)
Interface	NMEA 0183 Output 3 Ports, AIS Input 2 Ports (422 level and 232 level, only two choose one) , RS422 Input 2 Ports
Chart	C-MAP (MAX) & XINUO MAP
Power Supply	DC12V-36 V

Enviromental

Temperature	-15°C~+55°C
Waterproofing	IP65

GPS/WAAS

GPS Receiver	22 tracking/ 66 acquisition-channel GPS receiver Support multi-GNSS include QZSS, SBAS ranging WAAS/EGNOS/MSAS/GAGAN Support up to 210 PRN channels
Receive Frequency	L1 (1575.42 MHz)
Time to First Fix	Less than 39 seconds (Cold start)
Tracking Velocity	999 knots
Geodetic Systems	WGS-84 (and others)

ACCURACY	GPS	Position: < 15 meters, 95% typical Velocity: 0.1 knot RMS steady state
	DGPS (WAAS)	Position: <3 meters, 95% typical Velocity: 0.1 knot RMS steady state

Packing List	
Main Unit×1set	Data Cable with 7 pins plug×1 pc
Mounting Bracket×1pc	Data Cable with 8 pins plug×1 pc
Knob ×2 pcs	GPS Antenna×1 pc
Power Cable ×1 pc	User's Manual ×1 pc

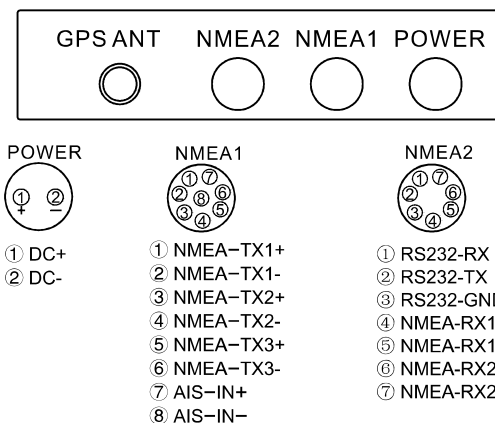
Standards

IEC 60945 :2002 EMC related items
ETSI EN 301 489-1V1.8.1 : 2008 EMC related items

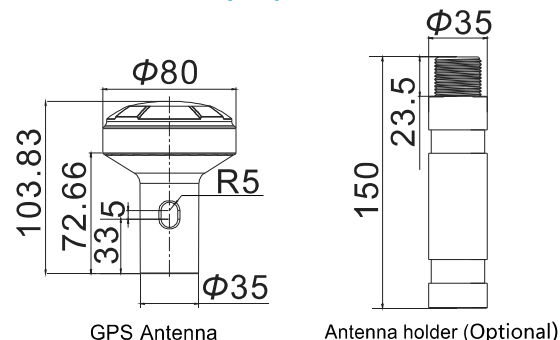
IEC 60950-1:2006
ETSI EN 301 489-3 V1.4.1 : 2002 EMC related items

IEC 60529:2006 EMC related items
ETSI EN 300 440-2 V1.4.1:2010 Spurious related items
ETSI EN 300 440-1 V1.6.1:2010 Spurious related items

» Interface Definition

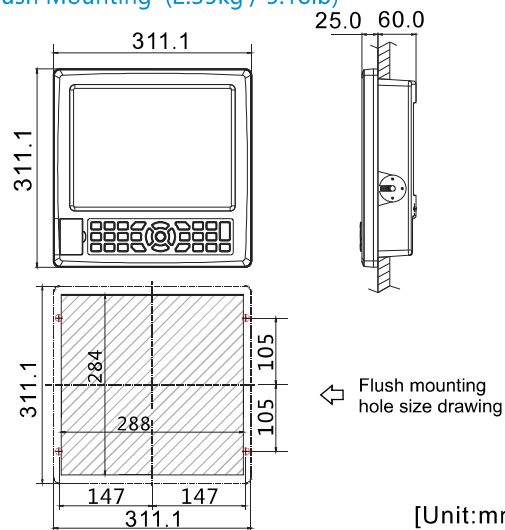
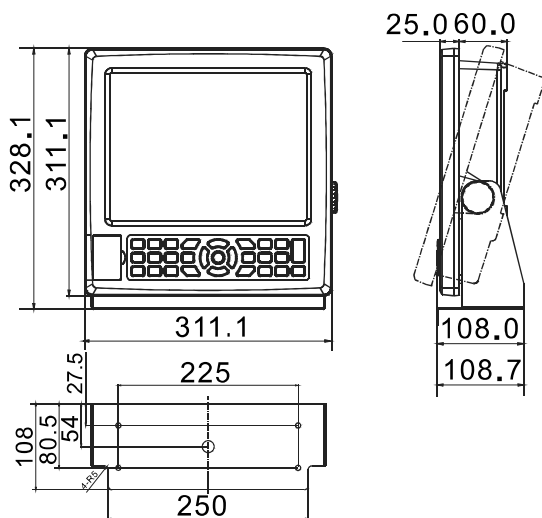


» GPS Antenna Unit (8m)



» Main Uint

Counter Mounting (3.2kg / 7.05lb)



[Unit:mm]



Dealer:



WWW.XINUO.COM
1702 V1.0

Xinuo Information Technology (Xiamen) Corporation Limited