

# Marine GPS Chart Plotter

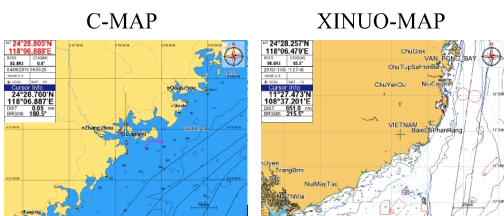
## Model: XF-1069

Support XINUO-MAP & C-MAP (MAX) Card



## Features

- ▶ 10.4" Color LCD with 800 x 600 resolution, high brightness and wide angle of view.
- ▶ C-MAP ( MAX ) & XINUO-MAP dual chart systems for user to choose.
- ▶ Provide AIS input interfaces to connect with AIS device conveniently and display AIS targets dynamically on the chart.
- ▶ Built-in global chart, upgrade XINUO chart regularly .
- ▶ Floating GND power design, more stable and reliable.
- ▶ Conform to IP65 water-proof standard.



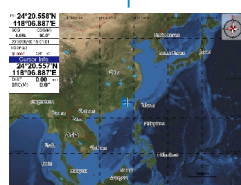
C-MAP (MAX)

Fully satisfy customers' require of electronic chart.

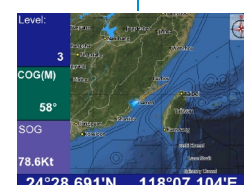


Update XINUO-MAP regularly.

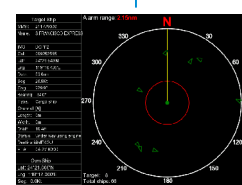
### Six modes of display



Standard Chart View



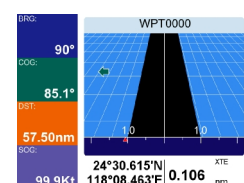
Simple Chart View



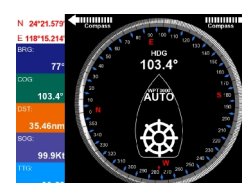
AIS Data



GPS Data



3D Navigation



Compass

# XF-1069 SPECIFICATIONS

## Display Unit

|                    |  |
|--------------------|--|
| Display Type       | Color TFT LCD  |
| Display Size       | 10.4 inch  |
| Display Resolution | 800 × 600 pixels (SVGA)  |
| Colors             | 16.7M  |
| Display Brightness | 400cd/m <sup>2</sup>   |
| Language           | English, Simplified Chinese, Traditional Chinese,  |
| Display Modes      | Standard Chart View, Simple Chart View,<br>AIS Data , GPS Data, 3D Navigation, Compass                                   |
| Memory Capacity    | 6000 waypoints;10000 marks; 800 tracks;<br>200 routes (48 points each route);<br>200drawlines (40 points each drawline); |
| Interface          | 1 serial lput 1 Ports , 2 serial Output 2 Ports,<br>AIS Input 1Ports,  |
| Chart              | C-MAP (MAX) & XINUO chart  |
| Power Supply       | DC10V-36V  |

## Enviromental

|               |             |
|---------------|-------------|
| Temperature   | -15°C~+55°C |
| Waterproofing | IP65        |

## GPS/WAAS

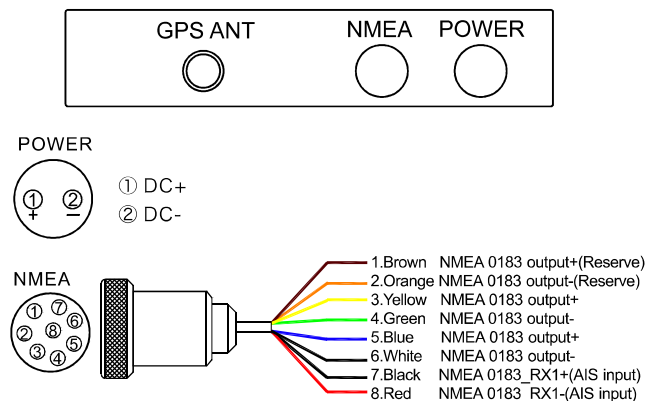
|                    |   |
|--------------------|---|
| GPS Receiver       | 22 tracking channels/ 66 receiving channels<br>Support WAAS/EGNOS/MSAS/GAGAN        |
| Receive Frequency  | L1 (1575.42 MHz)  |
| Time to First Fix  | Less than 39 seconds (Cold start)   |
| Tracking Velocity  | 999 knots   |
| Coordinate Systems | WGS-84 (and others)   |
| ACCURACY           | GPS Position: < 15 meters, 95% typical<br>Velocity: 0.1knot RMS steady state        |
|                    | DGPS (WAAS) Position: <3 meters, 95% typical<br>Velocity: 0.1 knot RMS steady state |

| Packing List         |                                  |
|----------------------|----------------------------------|
| Main Unit×1set       | Data Cable with 8 pins plug×1 pc |
| Mounting Bracket×1pc | GPS Antenna×1 pc                 |
| Knob ×2 pcs          | User's Manual ×1 pc              |
| Power Cable ×1 pc    |                                  |

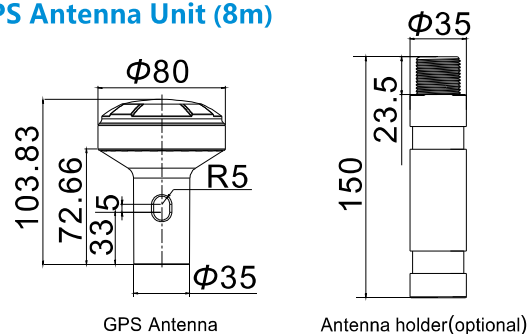
## Standards

IEC 60945 :2002 EMC related items  
ETSI EN 301 489-1V1.8.1 : 2008 EMC related items  
  
IEC 60950-1:2006  
ETSI EN 301 489-3 V1.4.1 : 2002 EMC related items  
  
IEC 60529:2006 EMC related items  
ETSI EN 300 440-2 V1.4.1:2010 Spurious related items  
ETSI EN 300 440-1 V1.6.1:2010 Spurious related items

## » Interface Definition

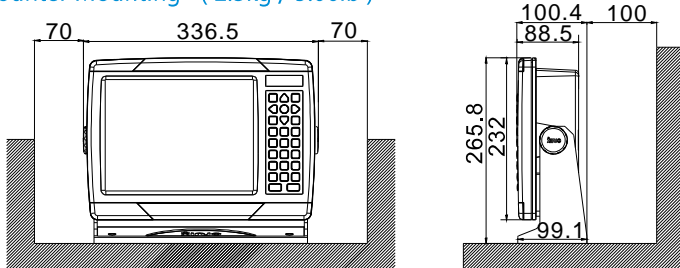


## » GPS Antenna Unit (8m)

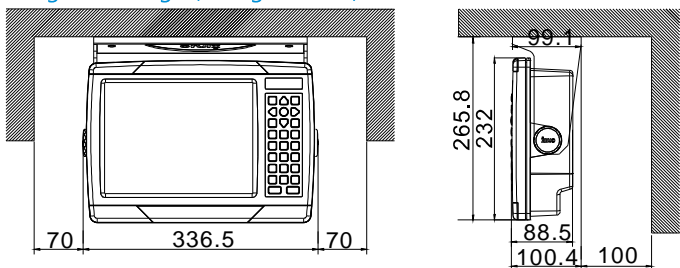


## » Main Unit

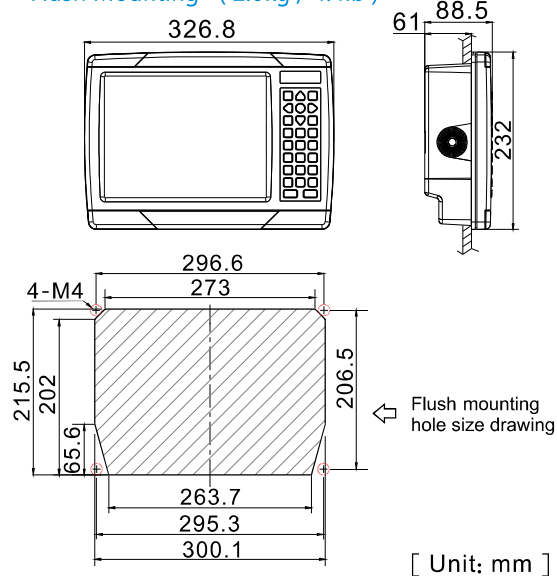
### Counter Mounting ( 2.3kg / 5.06lb )



### Ceiling Mounting ( 2.3kg / 5.06lb )



### Flush Mounting ( 2.0kg / 4.4lb )



[ Unit: mm ]



Dealer:



WWW.XINUO.COM  
1702 V1.0

Xinuo Information Technology (Xiamen) Corporation Limited